

VTX-240 **6**

CHASSIS MOUNTED PLATFORM

NOW
AVAILABLE ON A
3.5T GVW
IVECO
DAILY 35S



3.5T GVW



24.2M
ARTICULATED
BOOM



FPC
CONTROLS



H-FRAME
OUTRIGGERS



TYPE
APPROVED



EURO 6
COMPLIANCE

SPECIFICATIONS

	3.5T GVW Mercedes Sprinter Chassis Cab 4325mm WB	3.5T GVW Iveco Daily 35S Chassis Cab 4100mm WB
Working height	24.2m	24.2m
Platform height	22.2m	22.2m
Max. outreach at:		
80kg	12.5m	12.5m
120kg	11.2m	11.3m
200kg	9.0m	8.9m
220kg	8.2m	8.3m
Max. basket capacity	220kg	220kg
GVW	3500kg	3500kg
Max. slope	1° / 1°	1° / 1°
Payload (after driver, passenger and fuel)*	Circa 15kg	Circa 15kg

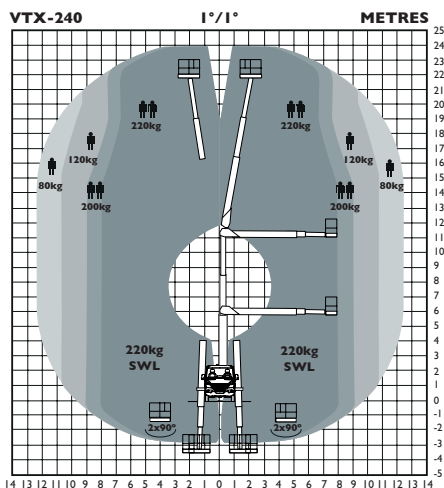
* Subject to options fitted

STANDARD

- Easy to use full proportional (FPC) CANbus controls with display
- Articulated boom
- Extendable H-frame outriggers to rear
- Emergency hand pump
- Two person walk-in aluminium basket (front mounted flat bottomed)
- 220kg SWL basket
- Outreach load sensing system
- Home function
- Euro 6 compliance
- Designed to work up to 3.0m below ground level

OPTIONS

- Amber LED beacons (front & rear)
- Hi-Vis chevrons
- Chapter 8 compliance



Working envelope at 80/120/200/220kg bucket SWL



Ability to access below ground



Also available on 3.5T GVW Iveco Daily 35S

VTX-240

CHASSIS MOUNTED PLATFORM



Low travel height



Easy to use full proportional (FPC) CANbus controls with display



The ability to work over rooftops to access difficult to reach areas is aided by a flat bottomed basket



Compact H-frame outriggers

The photographs in this brochure are for promotional purposes only. Specifications are subject to change without notice.



TRACK MOUNTED PICK-UP MOUNTED VAN MOUNTED CHASSIS MOUNT TRUCK MOUNTED INSULATED PLATFORM